

OPERA FOR THE YOUNG PRESENTS

# FAMILY PERA DAY

SATURDAY, MAY 31 • 9:30AM & 11:30AM

# MOZART'S THE MAGIC FLUTE

AN OFTY ORIGINAL PRODUCTION



OPERA FOR THE YOUNG'S FAMILY OPERA DAY IS PROVIDED FREE WITH THE SUPPORT OF

GREAT PERFORMANCE  
FUND FOR THEATER  
a component  
fund of the



**Madison**  
COMMUNITY FOUNDATION



**DANE ARTS**  
WITH ADDITIONAL FUNDS FROM THE ENDRES MFG.  
COMPANY FOUNDATION, THE FRYER FOUNDATION,  
INC., CHARITABLE ARM OF THE CAPITAL TIMES, THE  
W. JEROME FRANKFURTH FOUNDATION, AND THE  
PLEASANT T. ROWLAND FOUNDATION



For many years we have been a  
proud sponsor of the arts in Madison.



**THOMPSON**

INVESTMENT MANAGEMENT, INC.

SMART INVESTING STARTS HERE  
ONE RELATIONSHIP AT A TIME®

1-877-886-5777

**THOMPSONINVEST.COM**

THE FAMILY OPERA DAY PRESENTATION OF

# THE MAGIC FLUTE

*is made possible through the generous support of*

GREAT PERFORMANCE  
FUND FOR THEATER

a component fund  
of the  
**Madison**  
COMMUNITY FOUNDATION



*with additional support from*

  
Overture Center  
FOR THE ARTS

  
**DANE ARTS**  
WITH ADDITIONAL FUNDS FROM THE  
ENDRES MFG. COMPANY FOUNDATION,  
THE EVJUE FOUNDATION, INC.,  
CHARITABLE ARM OF THE CAPITAL  
TIMES, THE W. JEROME FRAUTSCHI  
FOUNDATION, AND THE PLEASANT T.  
ROWLAND FOUNDATION.

 **MADISON**  
**Arts**  
COMMISSION

 **WISCONSIN arts BOARD**  
Creativity. Culture. Community. Commerce.

with funds from the  
State of Wisconsin

LET'S **CREATE** THE NEXT GENERATION OF MUSIC LOVERS!

Your gift brings live opera to thousands of children across the Midwest - many for the first time. Just \$5 introduces one student to the magic of opera through inspiring performances and creative learning.

**DONATE NOW**



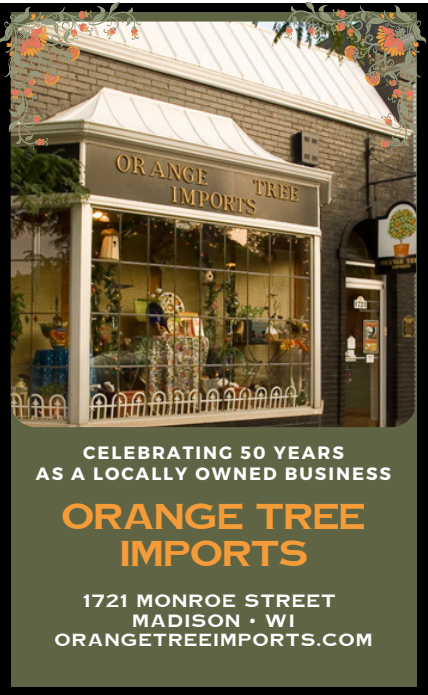
# OFTY STAFF, BOARD & MISSION

## OPERA FOR THE YOUNG STAFF & PRODUCTION TEAM

General Director.....	Saira Frank
Artistic Director.....	Diane Garton Edie
Director of Marketing and Development.....	Lisa VanderMause
Operations Coordinator.....	Isabel Celata
Music Director.....	Scott Gendel
Resident Costume Designer.....	Karen Brown-Larimore
Set Design.....	Donna Thorsen
Resident Set and Prop Designers.....	Greg Silver, Teresa Sarkela

## OPERA FOR THE YOUNG BOARD OF DIRECTORS

President.....	Kari Kastenholz
Vice President.....	Emily Whalley
Treasurer.....	Alyssa Kubishak
Secretary.....	Kaitlyn Konrardy
Members at Large.....	Cheryl Bensman-Rowe, Dave Coe, Julia Valgento



Opera for the Young’s mission:  
*to ignite enthusiasm for opera.*

The artistic vision in pursuit of that mission:

1. Engage and educate children about opera with professional, affordable, school-based performances;
2. Involve students in all aspects - from design to performance;
3. Provide professional opportunities for artists;
4. Foster the creation of new operatic works expressly intended for young audiences;
5. Broaden access to opera for the entire community.



# THE MAGIC FLUTE

Music by Wolfgang Amadeus Mozart  
Original libretto to *Die Zauberflöte* by Emanuel Schikaneder

Score adapted and arranged by Jeffrey Sykes  
Original libretto by Diane Garton Edie

Saturday, May 31<sup>st</sup>, 2025 • 9:30 AM & 11:30 AM  
The Playhouse • Overture Center for the Arts • Madison, Wisconsin

*Run time of 45 minutes with a question and answer session to follow.*

*Cast of characters:*

Queen	CAT RICHMOND
Pamina	ELEANOR MAYERFELD
Prince	CHRISTOPHER JACKSON
Papageno	LIFAN DENG
Pianist	VINCENT FUH
Choristers	MADISON YOUTH CHOIRS

## MADISON YOUTH CHOIRS

*Michael Ross, Artistic and Executive Director | Marie McManama, Conductor*

**[madisonyouthchoirs.org](http://madisonyouthchoirs.org)**

*Alien Council of Wisdom, Sarastro, Brave Alien:*

**COCO ADELMAN, NATALIE CALLIES, LOTTIE EIDSATH, CLARA  
GILLISMAN, RILEY HAUGE, JOSH KIM, ZOE MARTIN, ZAIA PARKER,  
ADDY SCHWEFEL, CHARLIE YOUNKLE**

Madison Youth Choirs (MYC) is dedicated to inspiring youth with a choral experience that fosters creativity, reflection, and the exploration of diverse ideas, while welcoming singers of all ability levels, annually serving hundreds of young people, ages 7-18, through a wide variety of choral programs in our community. Cultivating a comprehensive music education philosophy that inspires a spirit of inquiry leading students to become “expert noticers,” MYC creates accessible, meaningful opportunities for youth to thrive in the arts and beyond.

MYC co-led the development of the Madison Youth Arts Center (MYArts), an accessible, affordable home for dozens of youth arts education programs in our community. MYArts opened in May 2021 and serves as the permanent home for MYC and Children’s Theater of Madison.

## FROM THE ARTISTIC DIRECTOR

Welcome to Opera for the Young's Family Opera Day; thanks for joining us. We are thrilled to share 2025's final performance of our outer space adaptation of *The Magic Flute* with you! Since last October, our triple cast has traveled across the Midwest, reaching 60,000 students at 133 performances - including approximately 3,000 participating choristers. Teaching materials - including detailed tutorial videos - laid precise performance groundwork and students came well-prepared for their 'dress rehearsal' and collaboration with our cast. The materials were available to all, and thousands of audience members sang along with their performing classmates (always a very moving experience for our adult cast members).



Family Opera Day is a joint effort among professionals, children, volunteers, and audience. What a pleasure to be back at the Overture Center again with our good friends and collaborators: Madison Youth Choirs. This year the choristers portray the Council of Wisdom: peaceful aliens, including their three-headed leader and one particularly brave individual. Members of our staff and board share outer space-themed craft creations with children ("Let's Make a Prop") in the Rotunda before the performance. Today's professional cast leads audience members in a mini-workshop ("How Do We Sing?") to guide participants of all ages in healthy (and strategic) relaxation, posture, breathing and vocalizing.

For enhanced audience enjoyment, supertitles of all the lyrics will be projected at the sides of the stage.

Today's program would not have been possible without the significant investment and belief in Opera for the Young's mission and method by our presenting sponsor: The Madison Community Foundation's Fund for Theater. Additional support for Family Opera Day has come from Dane Arts with additional funds from the Endres Mfg. Company Foundation, The Evjue Foundation, Inc., charitable arm of The Capital Times, the W. Jerome Frautschi Foundation, and the Pleasant T. Rowland Foundation. We also thank American Girl's Fund for Children, Thompson Investment Management, the Wisconsin Arts Board, and our very generous and loyal individual donors - we hope you consider becoming one today!

Partnerships with like-minded arts organizations and supportive contributors are natural to our work and help us expand our ability to provide in-depth programming for everyone today. In addition, we thank Overture Center for making community programming like Family Opera Day possible.

Finally, congratulations to the invaluable team at OFTY - Saira Frank, Lisa VanderMause, Isabel Celata, Scott Gendel, and our wonderful designers, teaching artists and Board of Directors.

We hope you enjoy today's show, and – looking forward – please consider bringing Opera for the Young's *The Elixir of Love* to your local elementary school next season! (see back cover)

With warmest wishes,



Diane Garton Edie  
Artistic Director



# OPERA

## FOR THE YOUNG

*ignite enthusiasm for opera*

FIND YOUR  
LOCAL FAMILY FUN

# What are we doing today?



**Macaroni KID**  
Madison, WI



Find events, activities, products and  
places for parents, kids, and families  
[madisonwi.macaronikid.com](http://madisonwi.macaronikid.com)



## OFTY NEWS!

After 30 years of artistic leadership, Diane Garton Edie is taking a final bow! Diane joined OFTY in 1992 and has shaped generations of performances and performers. We're celebrating her retirement with gratitude and admiration -

## BRAVA, DIANE!

# CAST OF CHARACTERS

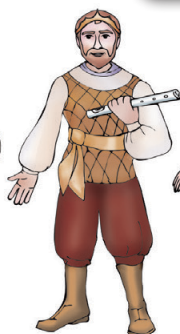
Illustrations by Ingrid Kallick, based on Karen Brown-Larimore's original costume concept



QUEEN OF THE NIGHT



PAMINA



TAMINO



COUNCIL OF WISDOM



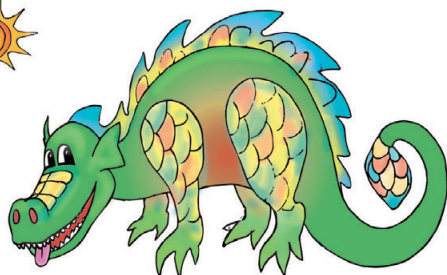
PAPAGENO



THREE LADIES



SARASTRO



THE DRAGON

# summer singing

cantando en el verano

para los grados 1-12+ | for grades 1-12+

## Enroll today!

tuition  
assistance  
available!

Introductory Choir  
Summer Choir Elementary  
Summer Choir Middle School  
Music Theory  
\$210 / class

MADISON  
YOUTH  
CHOIRS



@MYARTS

[madisonyouthchoirs.org/summer](https://madisonyouthchoirs.org/summer)

# THE MAGIC FLUTE SYNOPSIS

Once upon a time, a huge planet broke into two smaller planets. The bright Sun Planet was ruled by the good King Sarastro and the dark Moon Planet was ruled by the evil Queen of the Night.

## ACT 1

The opera begins on the Moon Planet. The Queen of the Night commands her soldier, Pamina, to fly off to the Sun Planet and steal the Sun Crest. Pamina is sad because she thinks the Queen's orders are wrong. She hears voices from the other planet telling her not to worry and to fly over to join them as a friend, instead. The Queen overhears this and she releases her Dragon to go after Pamina. Just then, Tamino lands on the Moon Planet and the Dragon chases him! The Queen's Ladies send the Dragon back to its cave and decide- now that Pamina is gone - to use Tamino to do what the Queen wants. Papageno, the Queen's Bird Catcher, meets up with Tamino and the two men are sent over to the Sun Planet to bring Pamina back. The Ladies give them Silver Bells and a Magic Flute to protect them.

## ACT 2

On the Sun Planet, the Council of Wisdom tells Tamino and Papageno that it is the Queen who is bad, not Sarastro! The men split up to find Pamina, and Papageno finds her first. The Queen arrives and tells Papageno and Pamina that they cannot escape her - she plans to conquer the Sun Planet! Tamino enters and tells Papageno to play his Silver Bells. The music makes the Queen dance. Papageno, Tamino, and Pamina believe they are safe, but the Queen grows angry again. Her Ladies join her and they all capture Sarastro. Tamino plays his Magic Flute and the Queen finally gives in and joins the others as they sing of peace and love.



# THE MAGIC FLUTE WRITERS

*The Magic Flute* librettist and stage director, **Diane Garton Edie** has enjoyed a combined career in performance, play writing and directing, and arts administration. With degrees in theatre and drama from Smith College and Indiana University, her special province is out-of-the-mainstream cultural arts programming for participants and audiences from a broad age, geographic and socioeconomic range. Previous projects include Creative Arts Over 60, an educational and recreational program for older adults; the International Youth Arts Festival, a performing and visual arts showcase; regional operetta/opera/musical theatre productions; and several original artist-in-residence programs.



Diane has adapted/created libretti for *The Barber of Seville*, *Beauty and the Beast*, *Cinderella*, *The Elixir of Love*, *The Pirates of Penzance*, *Orpheus Returns*, *The Magic Flute*, *Rusalka*, and *Hansel and Gretel*. Her first original opera, *Super Storm!*, premiered in October 2018. The publication and rental of this hailed collection now makes OFTY's uniquely accessible repertoire available to an even wider audience and now is performed across the United States and in Canada. **During Diane's time at Opera for the Young, more than 2.5 million children have been introduced to opera through her work.**

**Jeffrey Sykes**, DMA (Music Adaptor) was Opera for the Young's Music Director from 1997-2013. Jeffrey teaches at the University of California at Berkeley and is on the faculty of California State University-East Bay where he directs the piano accompanying program. He adapted scores for *The Magic Flute*, *Barber of Seville*, *Rusalka*, and *Hansel and Gretel*.



Jeffrey is the founder and artistic co-director of the Bach Dancing and Dynamite Society of Wisconsin. He is a regular guest artist in the Cactus Pear Music Festival in San Antonio and has served as the guest artistic director of Music in the Vineyards, a chamber music festival in Napa Valley. Sykes formed the San Francisco PanoTrio with violinist Axel Strauss and cellist Jean-Michel Fonteneau in 2009. He has recorded for the Albany, Mandala, Centaur, and Cactus Pear record labels.

Mr. Sykes holds degrees with highest honors from the University of North Carolina at Chapel Hill and the Franz-Schubert-Institut in Baden-bei-Wien, Austria and was a Fulbright scholar at the Hochschule für Musik in Frankfurt am Main, Germany. A recipient of the Jacob Javits Fellowship from the US Department of Education, he completed his doctorate at the University of Wisconsin-Madison.

## WRITERS' STATEMENT

This adaptation of *The Magic Flute* holds a special place in OFTY's collection: a masterwork by Mozart reimagined for young audiences through music, humor, and meaningful themes. The source material - Mozart and Schikaneder's fantastical opera - was both inspiring and challenging, with its moral ambiguities, complex plot, and adult content. We simplified the storyline while honoring the opera's humanitarian spirit, making Pamina a central figure whose choices drive the action.

Adapting *The Magic Flute* for OFTY's format meant distilling a large cast into four singers and a pianist, combining roles, and building meaningful chorus parts for students. We highlighted imaginative possibilities and set the story in outer space, leaning into children's natural fascination with the cosmos and this opera's magical roots. We created two three-headed alien characters who perform in two costumes with three head openings. Sarastro is embodied by three students and the Three Ladies are OFTY adults who are sometimes two humans and one puppet head. You'll see.

We preserved key musical contrasts: Papageno's folksy songs, the Queen's dazzling arias, and Tamino and Pamina's lyrical lines. In the end, we've crafted a story about growth, forgiveness, and courage - an opera that entertains, inspires, and welcomes kids into the world of Mozart.

Thanks for joining us for Family Opera Day - and welcome to our galaxy of enchantment, where aliens are welcoming and music brings peace.

*Sincerely, Diane Garton Edie and Jeffrey Sykes*



Students play the Alien Council of Wisdom in *The Magic Flute* wearing costumes designed by students through OFTY's *Be A Designer* Contest



Students perform as Sarastro and the Brave Alien in *The Magic Flute*

## THE 2024-2025 TOURING CAST

### **QUEEN:**

Megan Brunning, Krista Lawrence\*, Cat Richmond

### **PAMINA:**

Lydia Bangura\*, Gillian Hollis, Eleanor Mayerfeld\*

### **PRINCE TAMINO:**

Austin Bare, Christopher Jackson, Ryan Nash\*

### **PAPAGENO:**

Karl Buttermann\*, Lifan Deng\*, Joel Rogier

*\*Premier season with Opera for the Young*

OFTY teaching artists are selected annually through a competitive auditions process and are required to show impressive musical credentials and skill as well as the ability to engage creatively with children. Cast members are early to mid-career musicians who are serious about their craft and are committed to OFTY's educational ethos. They perform with such opera companies as Boston Lyric, Central City, Madison Opera, Florentine Opera, Finger Lakes Opera, Cleveland Opera, Union Avenue Opera, and the Grant Park and Chicago Lyric Opera choruses.

# FAMILY OPERA DAY ARTIST BIOGRAPHIES



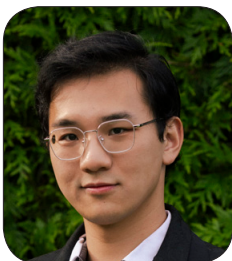
Soprano **Cat Richmond**, is a versatile musician with a “clear and gorgeous” voice (Broadway World) and is an accomplished, regional performer. Cat has appeared in a variety of opera, musical theatre, and cabaret productions. Favorite roles include Lucia (*Lucia di Lammermoor*), Die Königin der Nacht (*Die Zauberflöte*), Yum-Yum (*The Mikado*), Gretel (*Hansel and Gretel*), Martha (*Spring Awakening*), and Mary (*HAIR*). Most recently, she has been seen in the titular role in Madison Savoyards’ *Patience*.



Soprano **Eleanor Mayerfeld**, a Madison, Wisconsin native, made her debut as Susanna in *Le nozze di Figaro* with the Miami Music Festival. Career highlights include Gretel (*Hänsel und Gretel*) and Papagena (*The Magic Flute*). Eleanor holds a BA in Music from Middlebury College and an MM in Voice from the Longy School of Music. She enjoys teaching young musicians and has worked with the Cambridge Children’s Chorus and WYSO Music Makers.



**Christopher Jackson**, lyric tenor, is celebrated for his “beautifully warm voice” with a high extension. His operatic roles include Alfred (*Die Fledermaus*), Rinuccio (*Gianni Schicchi*), and Ferrando (*Così fan tutte*). Christopher has performed with Toledo Opera, Cincinnati Opera, and Sinfonietta Bel Canto. Recent musical theater credits include *South Pacific* and *West Side Story*. He also directs music at Fox Valley Presbyterian Church and teaches voice at McHenry County College.



Baritone **Lifan Deng**, originally from Shenzhen, China, and now based in Chicago, holds a Master of Music degree from Northwestern University and dual Bachelor’s degrees in Music, Mechanical Engineering, and Aerospace Engineering from Case Western Reserve University. Lifan is currently touring with Opera for the Young as Papageno in *The Magic Flute*, and will return next season as Sgt Bill Corey in *The Elixir of Love*. Lifan recently performed with Madison Opera as Fiorello in *The Barber of Seville* and Masetto in *Don Giovanni*. Lifan’s diverse talents span opera, musical theater, and other performing arts. [LifanDeng.com](http://LifanDeng.com)




Pianist **Vincent Fuh** has toured extensively with Opera for the Young since 1997. He has performed with top musical ensembles, including the Madison Symphony Orchestra, Wisconsin Chamber Orchestra, and Bach Dancing and Dynamite Society. Vincent co-founded and composed for salsa band Madisalsa and Afro-Cuban quintet El Clan Destino. His recordings feature collaborations with Marc Vallon, Laura Medisky, and Sinister Resonance, among others.



# OPERA FOR THE YOUNG CONTRIBUTORS

Opera for the Young thanks the following generous businesses, foundations, government agencies, and individuals who support our work and help us keep our programs affordable to schools and accessible to all children. Donations listed were received between January 1, 2024 - May 15, 2025.

## **BENEFACTOR (\$10,000+)**

- |                                 |  |
|---------------------------------|--|
| National Endowment for the Arts | Wartmann Endowment  |
| Mead Witter Foundation, Inc.    | Great Performance Fund for Theater*  |
| Twin Cities Opera Guild, Inc.   |  |

## **GUARANTOR (\$5,000+)**

- |                                   |                                     |
|-----------------------------------|-------------------------------------|
| David Flanders & Susan Ecroyd     | Dan & Barbara Garton                |
| Pleasant T. Rowland Foundation    | Diane Ballweg                       |
| Supporters of Opera Singers, Inc. | Thompson Investment Management, LLC |
| Lau & Bea Christensen+            |                                     |

## **PATRON (\$2,500+)**

- |                              |                                   |
|------------------------------|-----------------------------------|
| Wisconsin Arts Board         | Oshkosh Area Community Foundation |
| Dane Arts                    | Martha L & Charles Casey          |
| Green Bay Packers Foundation | Exact Sciences                    |

## **DIRECTORS' CIRCLE (\$1,500+)**

- |                        |   |
|------------------------|---|
| Deirdre Garton         | Madison Gas & Electric Foundation, Inc. |
| Cheryl Frazier         | Orange Schroeder                        |
| Paul Wertsch           | Kohler Foundation Inc.                  |
| myfriendtheaccountant^ | Arlene & Jack Schumann Foundation       |

## **ARTISTS' CIRCLE (\$1,000+)**

- |   |                        |
|---|------------------------|
| Dave Coe                                  | Evjue Foundation, Inc. |
| Enterprise Mobility Foundation            | Jason & Ana Stephens   |
| Chun Lin                                  | Bobbie Schrank         |
| Charles and Mary Anderson Charitable Fund | Diane Garton Edie      |

## **SPONSOR (\$500+)**

- |                                 |                           |
|---------------------------------|---------------------------|
| Chuck Beckwith & Chuck Bauer    | Iris Kurman & Seth Dailey |
| Paul Rowe & Cheryl Bensman-Rowe | Barbara Merz              |
| Mike McArdle                    | Diane Bless               |
| Opera for the Young Fund*       | Helen Bee                 |
| Tory Vollrath & John Mathwick   | Jessica Timman Schwefel   |

## **CONTRIBUTOR (\$250+)**

- |                             |                               |
|-----------------------------|-------------------------------|
| Susan Goeres & Marc Klein   | Eric & Patsy Vollrath         |
| Heather Good & Fiona Stoner | Kimberly Albright             |
| Kari Kastenholz             | Curt & Dawn Hastings          |
| Kathy Harker                | Cricket & Phil Redman         |
| Tiina Kurman                | Saira Frank & Miles Hofschulz |
| John & Karen Icke           |                               |

\*Component Fund of the  
Madison Community Foundation

^includes inkind donations  
+multi-year gifts



# OFTY CONTRIBUTORS CONTINUED

## FRIEND (\$50+)

Kaitlyn Konrardy  
Patricia Brady & Robert Smith  
Rebecca Wright  
Mindy Walker  
Nora Edie & Jed Roher  
Dorothy Mann  
Kent Peterson & Ann Herrold-Peterson  
Mary & Robert Stroud  
Tanya Mutasim Salman  
Mary Rasmussen  
Julia Valgento  
Diana Durant  
Cailin Mani  
Jim Lesniak & Shelly Armstrong  
William & Lynne Eich  
Ivy Corfis  
Bill White  
Millard & Barbara Susman  
Habem Goitom  
David Allen  
Julia Baer  
Ann McIntyre  
Sandra Buckley  
Katie Covi  
Patricia & Stephen Lucas  
Tom Terry  
Lisa and Mark VanderMause  
Kristina Rasmussen

Deanna Ballantine  
Megan Brunning  
Marijka & Ryan Engel  
Blythe Kennedy  
Joseph Ranney  
Tom Popp  
Table Wine  
Kay Belich  
Robert J. & Judith Rubin  
Lynn Najem  
Wesley & Anne Foell  
Sophia Monforte  
Erica & Andrew Jessen  
Naomi Lee  
Sally Severson  
Jim Inman & Teresa Bare-Inman  
Lona George  
Jean Ramer  
Luci Gernot  
Margaret & Matthew Payne  
ΣAI Madison Alumnae Chapter  
Ann & Mike Varda

### ♪ THE WARTMANN ENDOWMENT FOR OPERA FOR THE YOUNG

In 2001, William and Joyce Wartmann's \$100,000 gift established an endowment for Opera for the Young. The Wartmann's dream was for a million dollar fund that would provide \$50,000 each year to OFTY in operating support.

## Quivey's Grove

*One part History.  
One part Charm.  
Two parts Fabulous Cuisine.*

### STONE HOUSE

*Celebrating Wisconsin's heritage of comfort food is a truly memorable dining experience!*

### STABLE GRILL

*The restored horse stable features Wisconsin Micro-tap beers and wines, and casual dining in the hay loft.*

6261 Nesbitt Rd.  
Madison ~ 273.4900  
[quiveysgrove.com](http://quiveysgrove.com)



# THE MAGIC FLUTE: TOUR REVIEWS

## FROM MUSIC EDUCATORS...

🎵 "I love that I get to highlight students who maybe are not successful in other academic areas. A few of my students got to show who they really are in front of the whole school. Such a confidence booster. My Kindergarten students were mesmerized by the Magic Flute. I am sure they went home and shared with their families. Just another great tool for music advocacy."

Bath Waldron, Viking Elementary (Holmen, WI)

🎵 "I feel that having Opera for the Young come to our school helps broaden our students' cultural horizons. You never know if you're going to light a spark in a future performer. I feel, as a music teacher, it is my duty to expose students to all genres of music and this was a fabulous culminating experience after teaching students about Opera."

Theresa Schmidt, Hilltop Elementary (Mound, MN)

🎵 "[T]he theme of The Magic Flute is really good for English Language Learners. Our school is like 20% hispanic and the themes of GOOD and EVIL are easy for a kindergartener with minimal English to understand. I also really appreciated the diverse cast members of your organization. It is awesome to have opera singers that look like my students.."

Gina Haugen, Glen Stephens Elementary (Madison, WI)

## FROM STUDENTS...

🎵 "I really I mean really love it."

Harper, Grade 5

🎵 "that when I grow up I want to be in a opera like you guys I would like to say that the opera was an amazing experience and very fun I think that this was the best opera I have experienced"

Jaycie, Grade 5

🎵 "You guys did a super great job! I love this program every year we do it the show always turns out sooooo good and fun!"

Campbell, Grade 5

🎵 "I liked the start because the queen was singing a really crazy song.HOW DID SHE DO THAT"

Grace, Grade 4

🎵 "I loved the Opera it was so fun because I was in the opera."

Dalila, Grade 3

# THE MAGIC FLUTE TOUR: FUN FACTS!

## INTERESTING TIDBITS FROM 2024-2025 SCHOOL TOUR

OFTY reached 118 schools this season giving 133 in-person performances in five states (WI, KY, IL, & MN).

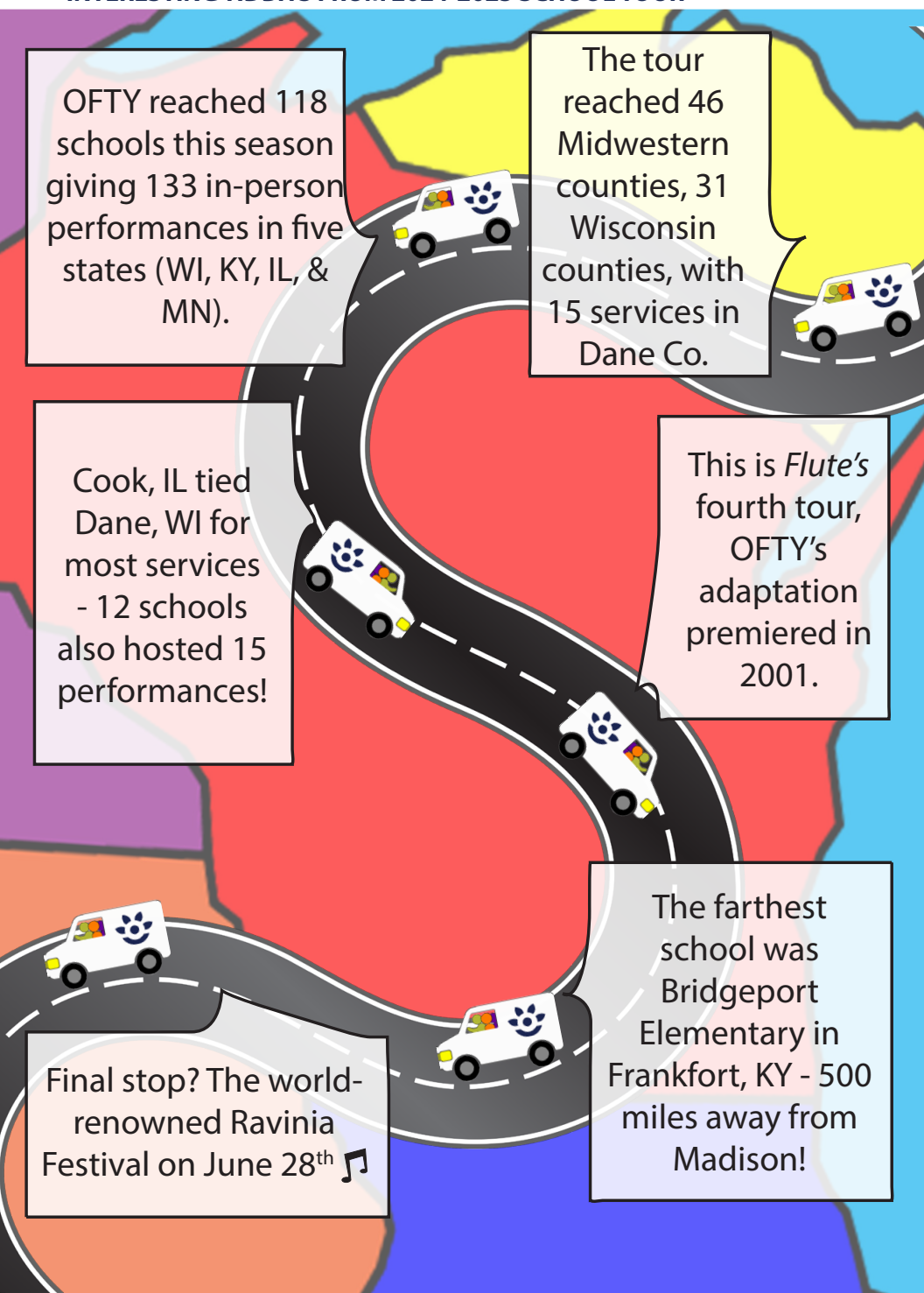
The tour reached 46 Midwestern counties, 31 Wisconsin counties, with 15 services in Dane Co.

Cook, IL tied Dane, WI for most services - 12 schools also hosted 15 performances!

This is *Flute's* fourth tour, OFTY's adaptation premiered in 2001.

Final stop? The world-renowned Ravinia Festival on June 28<sup>th</sup> 🎵

The farthest school was Bridgeport Elementary in Frankfort, KY - 500 miles away from Madison!



# University Opera

PRESENTS

## Le nozze di Figaro

Wolfgang A. Mozart



## Our Town

Ned Rorem

2025-2026 SEASON

Your gift can ignite a love for the arts...  
thank you from the bottom of our hearts!



**OFTY.ORG/GIVE**

OPERA FOR THE YOUNG  
6441 ENTERPRISE LN, STE 207  
MADISON, WI 53719-1163  
608.277.9560



OPERA4THEYOUNG



OPERA4THEYOUNGMADISON



OPERA4THEYOUNG



Madison Savoyards presents  
Gilbert & Sullivan's fairy opera



# Iolanthe

or, The Peer and the Peri

*Iolanthe* is the story of a fairy who breaks the law by marrying a mortal. Twenty-five years later, her son—half-mortal, half-fairy—falls in love with a mortal woman, a crime punishable by death. As tensions rise, Iolanthe takes a stand to challenge tradition and protect her son's future.

The production brings together a remarkable cast of singers and musicians for a delightfully irreverent experience the whole family can enjoy. Don't miss this iconic blend of farce and fantasy from the beloved duo behind *The Pirates of Penzance* and *HMS Pinafore*.



August 1 • 8  
at 7:30pm

August 2 • 3 • 9 • 10  
at 3:00pm

Bartell Theatre  
113 E Mifflin St Madison

FREE Children's Pre-show  
Saturday Aug 2 at 1:00pm

Tickets: 608-661-9696

[bartelltheatre.org](http://bartelltheatre.org)



[madisonsavoyards.org](http://madisonsavoyards.org)



# THE ELIXIR OF LOVE

AN OFTY ORIGINAL PRODUCTION



## Saddle up!

In the dusty town of Lonesome Gulch, the swaggering Sergeant Corey looms over timid Jimmy Reno as they vie for Miss Addy's attention, while the sly Dr. Dulcamara rolls in, peddling her so-called magic elixir - nothing but a bottle of root beer!

Sixteen elementary students take the stage as the Justice of the Peace, the Soldier, and the lively townsfolk.

With playful melodies and laugh-out-loud comedy, *The Elixir of Love* whisks students away to America's Old West, packed with timeless music, mischievous fun, and lessons on growing up and forgiveness.

**OFTY.ORG/BOOKING**