

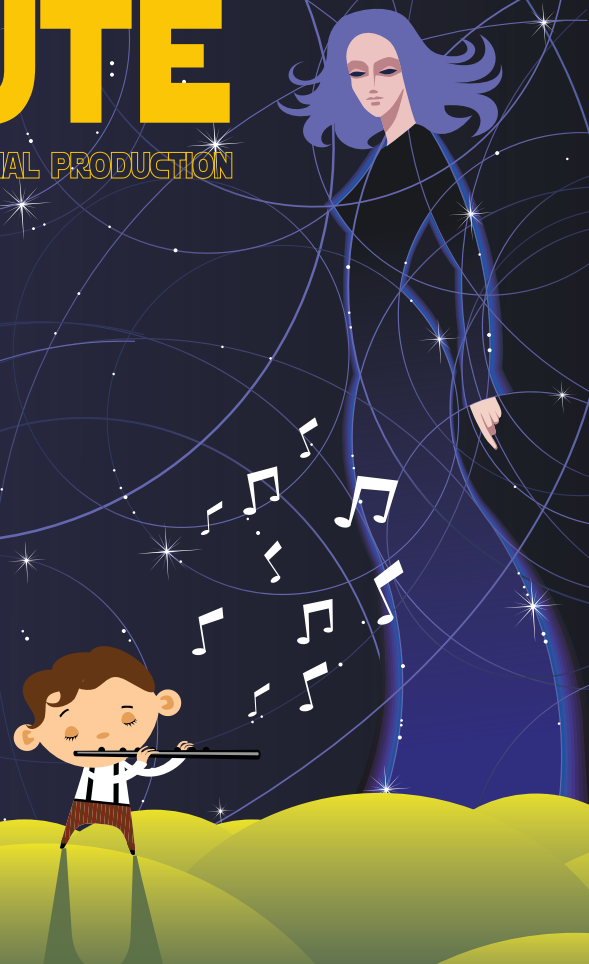
MOZART'S THE MAGIC FLUTE

AN OFTY ORIGINAL PRODUCTION

Opera for the Young is a professional touring company based in Madison, Wisconsin. From October 2024 to May 2025, we will perform 200 shows in elementary schools throughout the upper Midwest. Our outer space adaptation of *The Magic Flute* is a 45-minute show with triple cast roles for 2 sopranos (Queen of the Night/First Lady, Pamina/Second Lady), tenor (Tamino), and baritone (Papageno/Third Lady).

Cast members drive the tour van, load and unload set pieces, and train student performers for 7-10 shows per week. Compensation is \$65 per show plus \$40 per diem and travel/lodging while on tour. Each artist receives lodging and \$525 for the mandatory rehearsal period October 4-11, 2023. Each artist will tour 5-8 weeks.

Live auditions are encouraged, digital auditions are also accepted (due 3/23)



Based on
DIE ZAUBERFLÖTE

by
**Wolfgang Amadeus Mozart
& Emanuel Schikaneder**

Music Adapted and Arranged
by
Jeffrey Sykes

*Original Libretto and
Stage Direction*
by
Diane Garton Edie

Musical Direction by
Scott Gendel

Opera for the Young

6441 Enterprise Lane, Suite #207
Madison, WI 53719

Tel: 608-277-9560

info@ofty.org | www.ofty.org

Please contact us with any questions

HOW TO AUDITION:

- Submit your audition form (headshot and resume required, references and recordings encouraged) online at ofty.org/auditions. (*digital auditioners - see below)
- Prepare your audition repertoire (an aria in original language that demonstrates both sustained singing and coloratura AND an aria or art song in English (original language or translation))
- Prepare the musical excerpt(s), and dialogue from *The Magic Flute* for your role (visit ofty.org/auditions for excerpts and accompaniments)
- We will contact you with a live audition slot
- ***Digital auditions** - prepare and record your audition rep, musical excerpts, dialogue and kid questions BEFORE you submit your audition form, then include those recordings there.

OFTY.ORG/AUDITIONS